

CROWN XCL

XTERIOR COMPACT LAMINATES

CROWN DÉCOR PVT.LTD.

6 Patel Avenue, 1st Floor,
S.G. Highway, Near Gurudwara,
Ahmedabad - 380 059, Gujarat, India.
Contact : +91 79 4001 7979

FACTORY

419/1, Radhe Industrial Estate,
Tajpur Road, Dist. Ahmedabad
Changodar - 382 213, Gujarat, India.

MARKETING OFFICE

2/A N Malayalay, 2nd Floor,
3 Woodburn Park, Kolkata - 700 020, India.
Ph : +91 33 4066 0166, 2283 0166
E-mail : kanishka@royaletouche.com



Impression...
leave it on our
decking

CROWN XCL
XTERIOR COMPACT LAMINATES

www.royaletouche.com



From the house of CrownXCL® , Impression is a revolutionary exterior decking material suitable for various outdoor applications. Impression planks are formulated from specialty papers and resins under high pressure and temperature. Impression decking is durable, anti -slip, frost resistant, and eco friendly. Our warm wood finishes boast the beauty of real wood without maintenance or fading. Planks are available in a variety of thicknesses and lengths.

Impression decking uses rivet-free technology and durable clamps for ease of installation. Our planks can be attached to aluminum, galvanized steel or wood frame construction.

Impression decking is an excellent choice for terraces, balconies, fences, pool enclosures, kitchens or any outdoor living space where durability and beauty are important.

Size Available : 600 x 1000mm, 300 x 1500mm, 200 x 3050mm, 200 x 1500mm, 600 x 600mm, 300 x 600mm

Thickness :



CrownXCL® is committed to the environment.

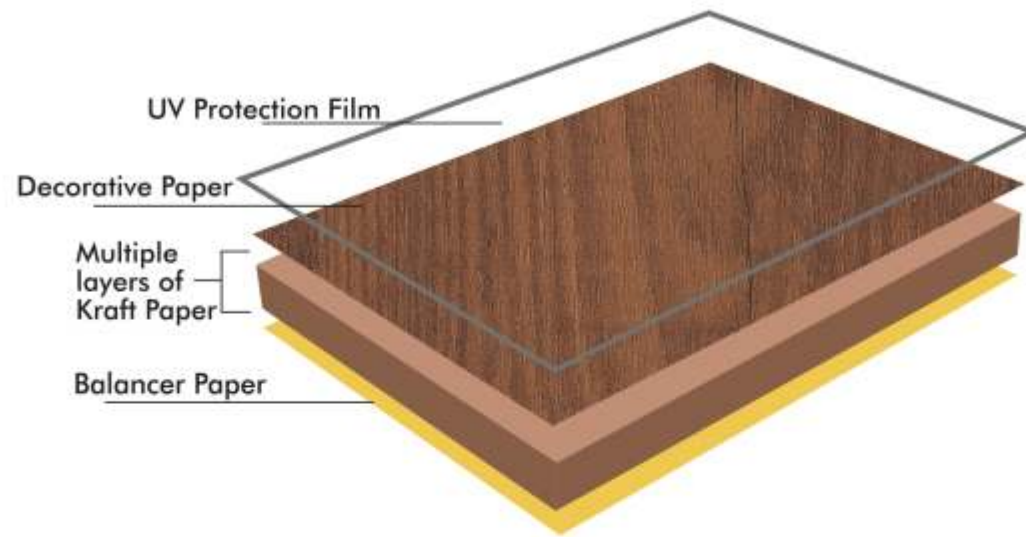
The paper used to manufacture CrownXCL® is made from raw material sourced from sustainable forests.

Our panels are made from 80% cellulose fibres obtained from sustainably sourced paper and 20% thermosetting resins. CrownXCL® does not contain any heavy metals or asbestos, and therefore do not emit any gases, fumes, solvents, or liquids. As a result, CrownXCL® panels do not have any polluting effect on the environment. CrownXCL® panels have been independently tested and found to conform to multiple existing environmental certifications including the Greenguard Gold certification and the Intertek Green Leaf certification.



MANUFACTURING PROCESS

COMPOSITION



CrownXCL® compact laminate is a solid phenolic exterior panel with a textured anti-slip hexa-pattern surface. Impression decking is manufactured using thermosetting resins reinforced with cellulose fibre for added strength and durability.

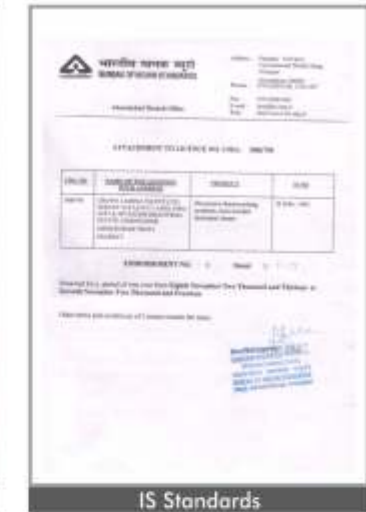
An acrylic overlay provides UV protection and our panels are rigorously tested for durability in accordance with EN 438. The hexa-pattern surface texture makes it anti-slip, anti-skid, and frost resistant.

FEATURES and BENEFITS

- Decorative
- Weather Resistant
- Optimal Light Fastness
- Scratch Resistant
- Solvent Resistant
- Self Supporting
- Impact Resistant
- Heat Resistant
- Fire Resistant
- Sustainability
- Skid Resistant
- Strong
- Environmentally Friendly
- Easy to Clean and Maintain
- Quick and Easy to Assemble
- Overall Light Weight Substructure
- Both Concealed and Exposed Fastening systems are available



CERTIFICATIONS





CrownXCL® introduces Anti-Skid Technology

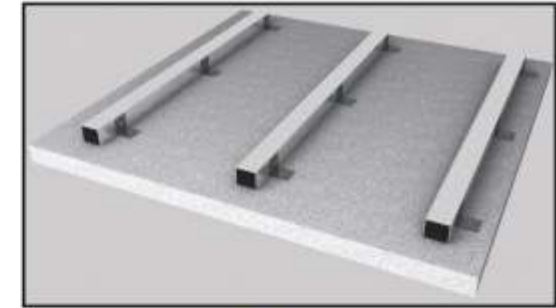
Impression decking is made with a hexagonal surface texture which makes it highly abrasive, anti-slip, anti-skid and frost resistant. It is an eco-friendly and durable solution for decks, pool surroundings, balconies, terraces, stairs, gardens or any outdoor space. Impression decking is extremely durable and resistant to everyday wear and tear.



INSTALLATION with ADHESIVE

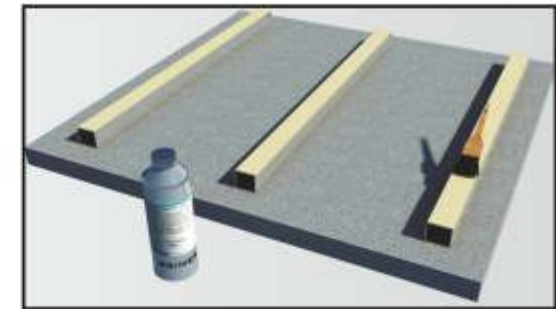
1. Substrate and Substructure Preparation:

The substrate should not be grass or soft landscaping and must be attached to a load bearing structure with a minimum distance of 25mm from the surface for ventilation. The substructure should have a downward slope of 1.5°.



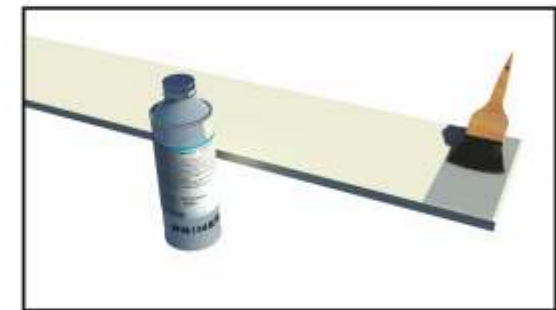
2. Cleaning :

The substructure must be thoroughly cleaned and free of any loose debris. We recommend that Dow Corning® R40 or R41 cleaner be used to remove dirt or any other contaminants from the surface prior to application of adhesives. Oily residues and dust will prevent a robust connection between the substructure and planks.



3. Primer Application :

Manually apply a thin, uniform layer of primer to the plank surface where adhesive will be applied. The recommended adhesive for use with Impression Decking is Dow Corning® 896 PanelFix.

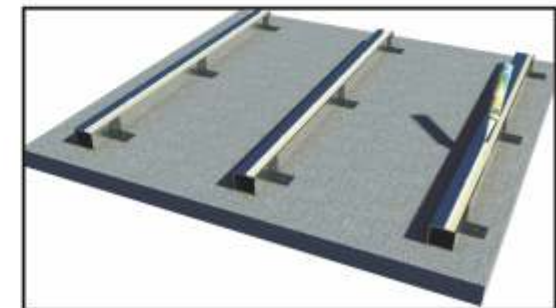


4. Plank Attachment:

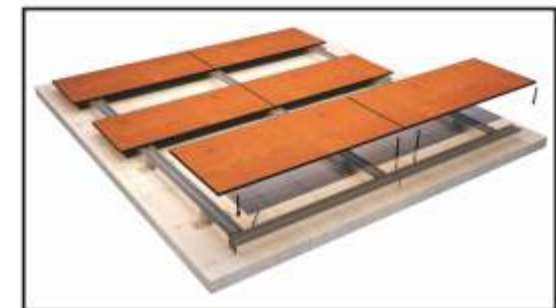
a. After cleaning and applying the primer, ensure that the surface is dry. Next, apply Dow Corning® 896 PanelFix tape (12mm x 3.2mm, black) length wise along the substructure, continuously. Do not remove protective backing from the tape until the floor boards are ready for application. Attaching the tape before the adhesive provides a template for the adhesive and also prevents the adhesive from bleeding into the visible joint.



b. Apply the 896 PanelFix adhesive to the substructure and directly onto the panel. The adhesive should be applied continuously with a caulking gun (minimum 5mm from the tape). Extrude a wide bead of silicone to achieve the required joint dimension. Remove the protective layer from the tape after the adhesive application.



c. Position the floor board by gently pressing and adjusting it if necessary. Once aligned, apply pressure and ensure that the adhesive tape is in constant contact with the surfaces of the floor board and substructure.

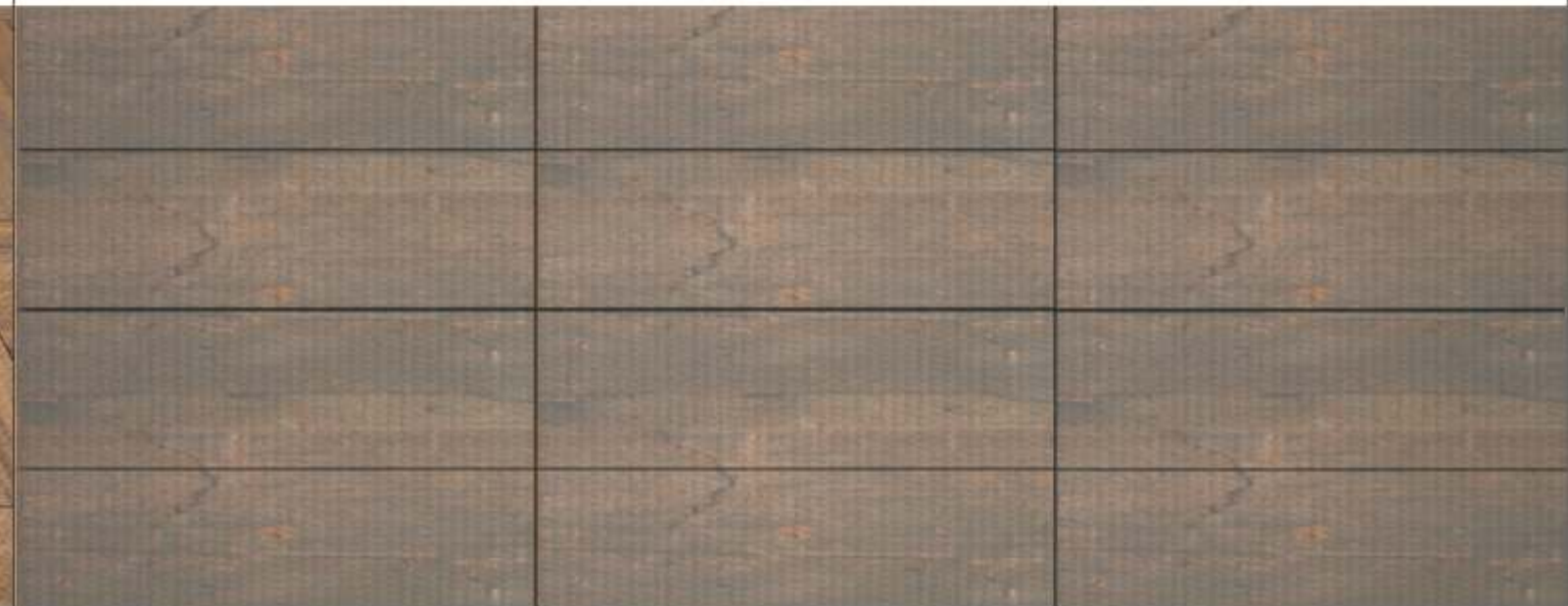
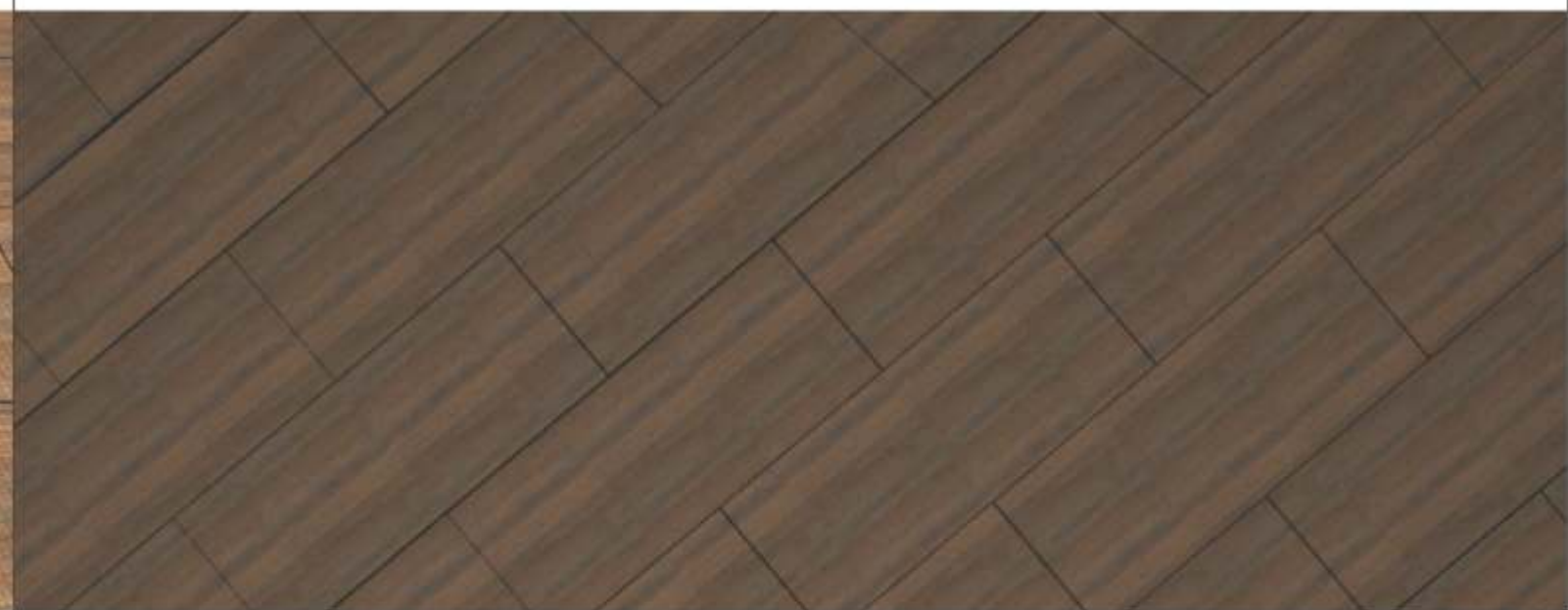


Installation

ENDLESS DESIGN POSSIBILITIES



ENDLESS DESIGN POSSIBILITIES







Swimming Pool Decks







Stairs







Multi-Level Terraces



Outdoor Dining Areas



COLOUR RANGE












COLOUR RANGE



COLOUR RANGE



ACCESSORIES

			
SQUARE EXTRUSION	DEAD LOAD BRACKET	SELF DRILLING SCREWS	ADHESIVE PRIMER
			
SILICONE ADHESIVE	ADHESIVE TAPE	NUT AND BOLT	FASTENER
			
CIRCULAR OR SKILL SAW	POWER DRILL		

